



Sammy the Squirrel Savings Box



Sammy helps kids save smartly!

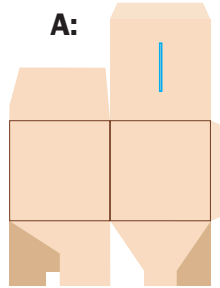
Here's how to build your Sammy Savings Box, so you too can save smartly!

- 1) Start by coloring in your Sammy Savings Box.
- 2) Have an adult help you cut out the box pattern with scissors along the **solid outside lines**, and cut out the coin slot on the top lid.
- 3) Fold along all dashed lines to start the box shape.
- 4) Fold your Sammy Savings Box to look like starting position **A** (see below):
- 5) Press the edges together to form the box and fold the **bottom** flaps in so they lock together, starting with flap **1**, then **2**, then **3**. Tuck flap 4 into the slot so it locks them all together (you can also tape the bottom).
- 6) Fold the two side flaps on **top** towards the center and close the top lid.

Now you're ready to start saving!

(Don't forget, for every deposit you make, we'll give you a punch on your Rogue Rangers punch card. After every 5 punches, you'll receive a special prize!)

A:



Bring your completed Sammy Savings Box into any Rogue branch to receive \$1 into your Ownership Account.



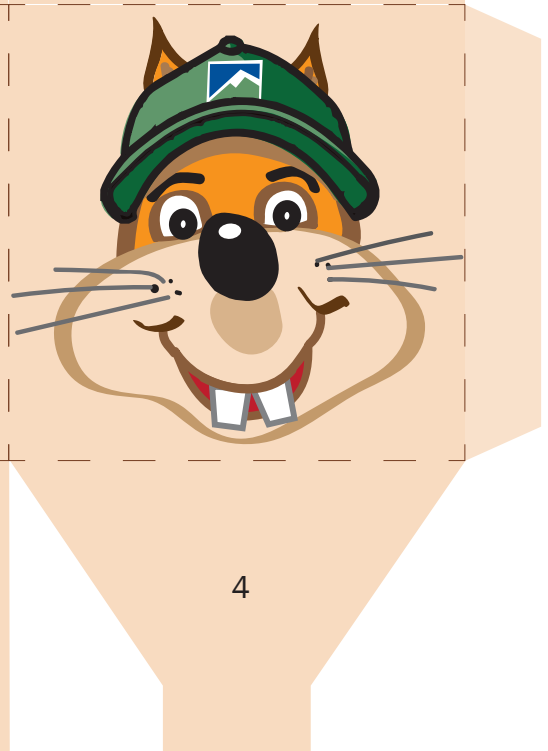
2



1



3



4